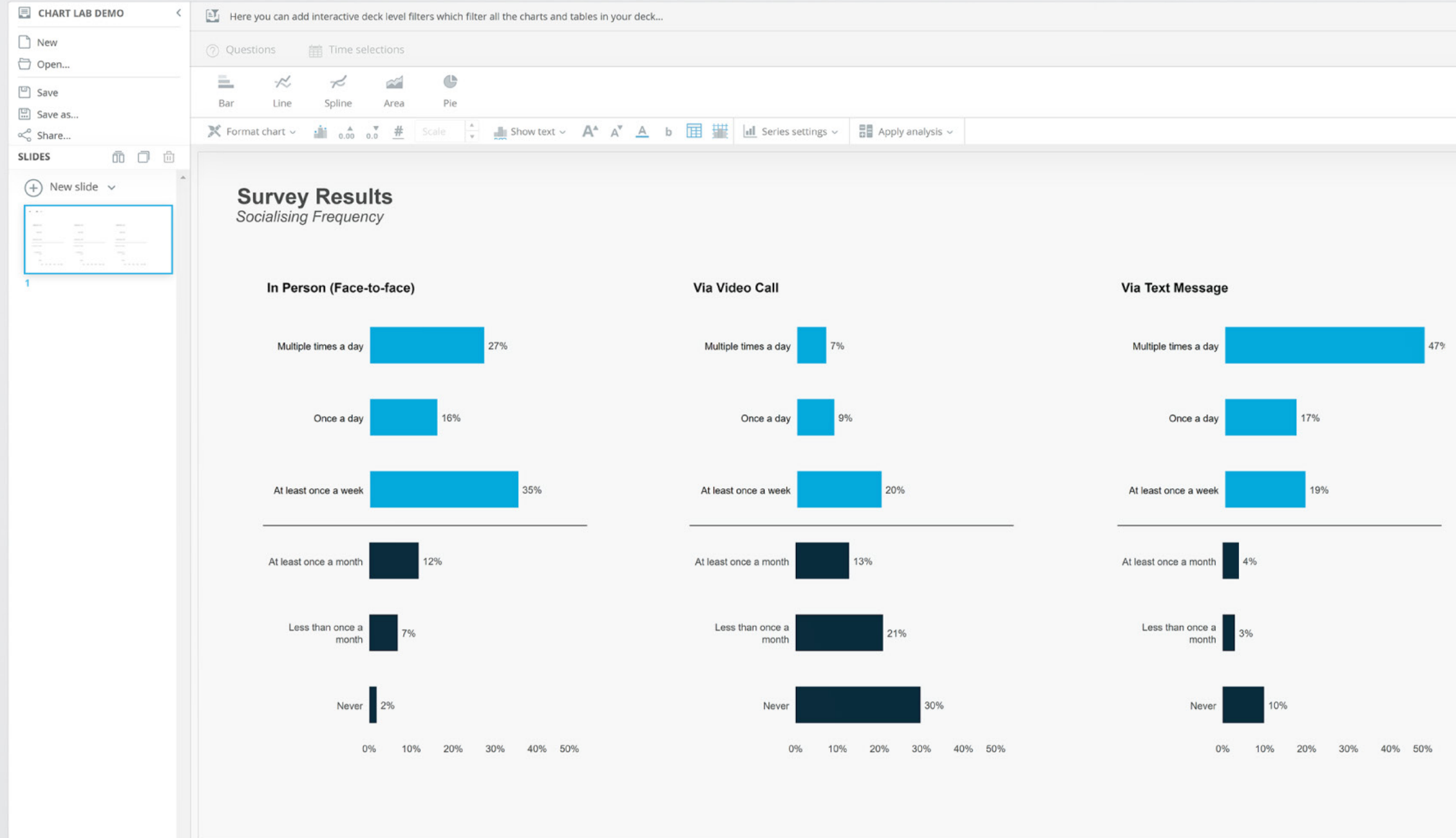


INTRODUCING THE
Self-analysis
Portal



Discover Self-analysis

The Self-analysis Portal is the perfect tool for data interrogation. It lets you easily create set of tables and decks to visualise your research data.

With the Self-analysis portal, you have a robust table and chart creator at your fingertips. Create highly customised tables and charts in seconds with the intuitive drag-and-drop interface.

[See live demo](#)

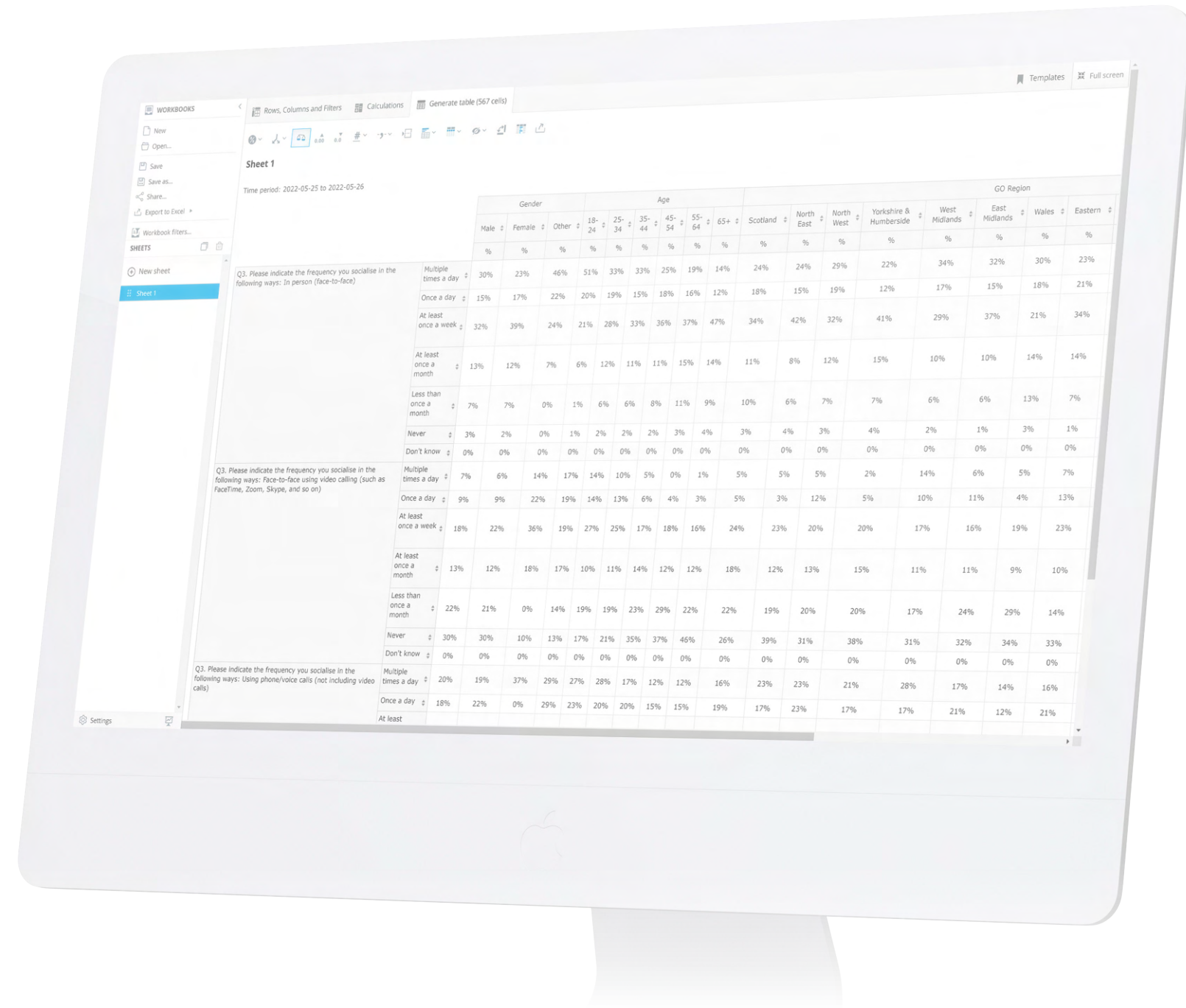


TABLE LAB DEMO

Rows, Columns and Filters | Calculations | Generate table (140 cells) | Templates | Full screen

Sheet 1

Time period: 2022-05-25 to 2022-05-26

Q1. Not including time spent working, approximately how many hours do you spend online each day?

	Less than 1 hour	Between 1-2 hours	Between 2-3 hours	Between 3-4 hours	Between 4-5 hours	Between 5-6 hours	Between 6-7 hours	Between 7-8 hours	More than 8 hours	Don't know
%	%	%	%	%	%	%	%	%	%	%
Multiple times a day	20%	25%	29%	27%	29%	27%	29%	25%	27%	21%
Once a day	12%	16%	18%	17%	17%	15%	18%	8%	16%	11%
At least once a week	43%	36%	34%	38%	34%	30%	26%	43%	34%	32%
At least once a month	14%	13%	12%	9%	12%	13%	19%	16%	11%	11%
Less than once a month	8%	8%	5%	7%	6%	13%	5%	3%	9%	14%
Never	2%	3%	1%	2%	1%	2%	4%	6%	3%	12%
Don't know	0%	0%	0%	0%	0%	0%	0%	0%	0%	0%

Q3. Please indicate the frequency you socialise in the following ways: Face-to-face using video calling (such as FaceTime, Zoom, Skype, and so on)

	Less than 1 hour	Between 1-2 hours	Between 2-3 hours	Between 3-4 hours	Between 4-5 hours	Between 5-6 hours	Between 6-7 hours	Between 7-8 hours	More than 8 hours	Don't know
%	%	%	%	%	%	%	%	%	%	%
Multiple times a day	3%	5%	8%	6%	7%	11%	8%	12%	11%	0%
Once a day	2%	7%	7%	13%	14%	6%	19%	7%	14%	5%
At least once a week	18%	19%	25%	19%	19%	22%	15%	31%	15%	2%
At least once a month	11%	14%	10%	14%	11%	16%	15%	18%	7%	22%
Less than once a month	20%	22%	20%	20%	24%	21%	21%	24%	21%	27%
Never	46%	33%	29%	29%	26%	25%	23%	7%	32%	44%
Don't know	0%	0%	0%	0%	0%	0%	0%	0%	0%	0%

Table Lab

Table Lab allows you to interrogate your research data by creating custom tables where you have complete control over variables, filters, data splits, and more. Find additional insights with a robust set of statistical calculation tools.

Table Lab now includes a 'workbook and sheets' functionality. This allows the creation of sets of tables (sheets) and to save these as a workbooks, which improves efficiency when creating tables in bulk.

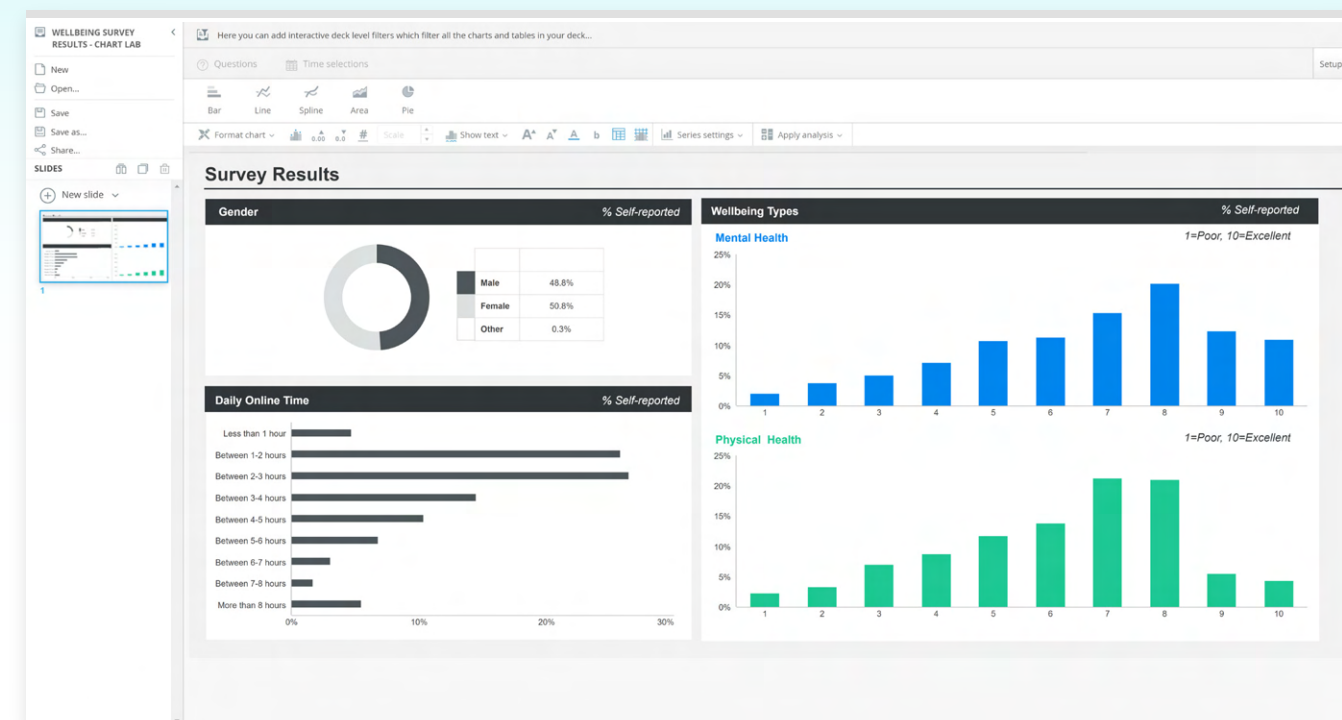
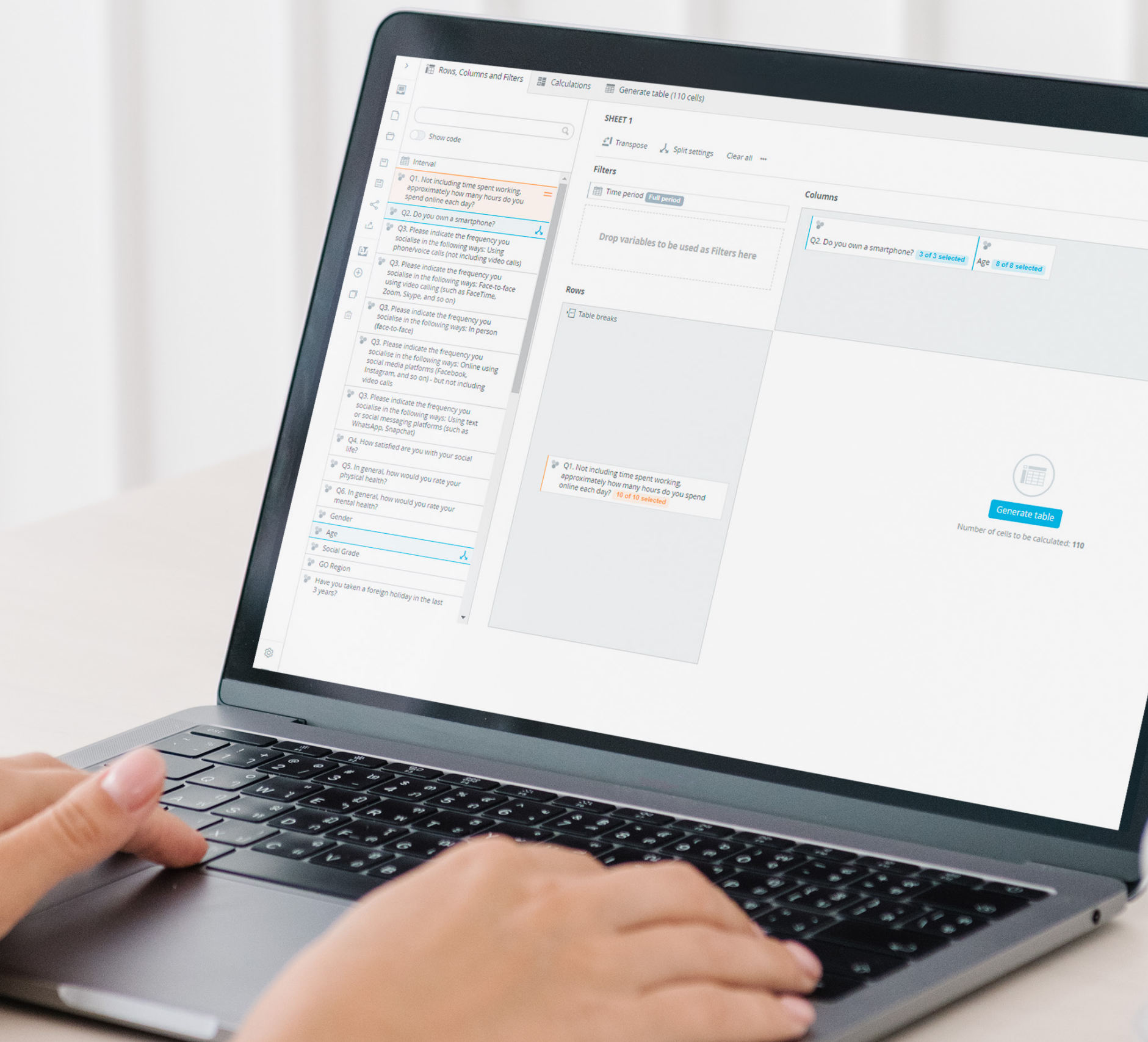


Chart Lab

Chart Lab is a complete chart creation tool where you can visualise your research data, create presentation decks, and export to PowerPoint and PDF.

You can combine charts in any way you see fit and add other media such as text, images, and more to tell the story of your data.



Delivery time

The Self-analysis Portal has our quickest turnaround. They can be delivered within one working day.

Product information

Includes the following:

- **Online portal** to access your data.
- **Table Lab:** create and export custom data tables, filter by demographics, and export to Excel.
- **Chart Lab:** create custom charts and slide decks and export to PowerPoint.

Cost

The Self-analysis Portal has a starting price of **£500.00**.

Additional content available upon request. Extra charges may be applied.

.YONDER
DATA SOLUTIONS

At Yonder Data Solutions, our purpose is in our name. We exist to help our clients go further with focus.

We are a trusted fieldwork and data collection company. We partner with our clients to provide high-quality data capture and analytics solutions that unlock opportunity and drive business success.

London Office

Northburgh House
10 Northburgh Street
EC1V 0AT, London.

T: 020 7253 9900

E: hello@yonderdatasolutions.com

